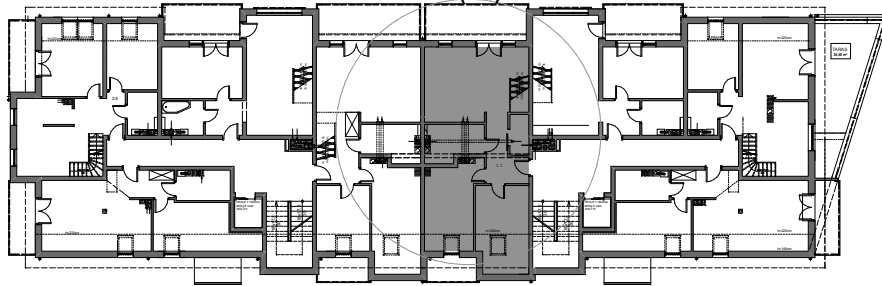


# BUDYNEK MIESZKALNY WIELORODZINNY

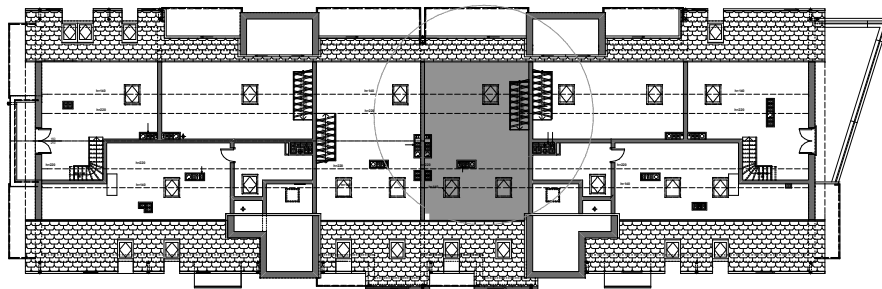
UL. NEHRINGA NR 6A I 6B, SZCZECIN

**NR 12**  
(M2)



**NR12** (M2)

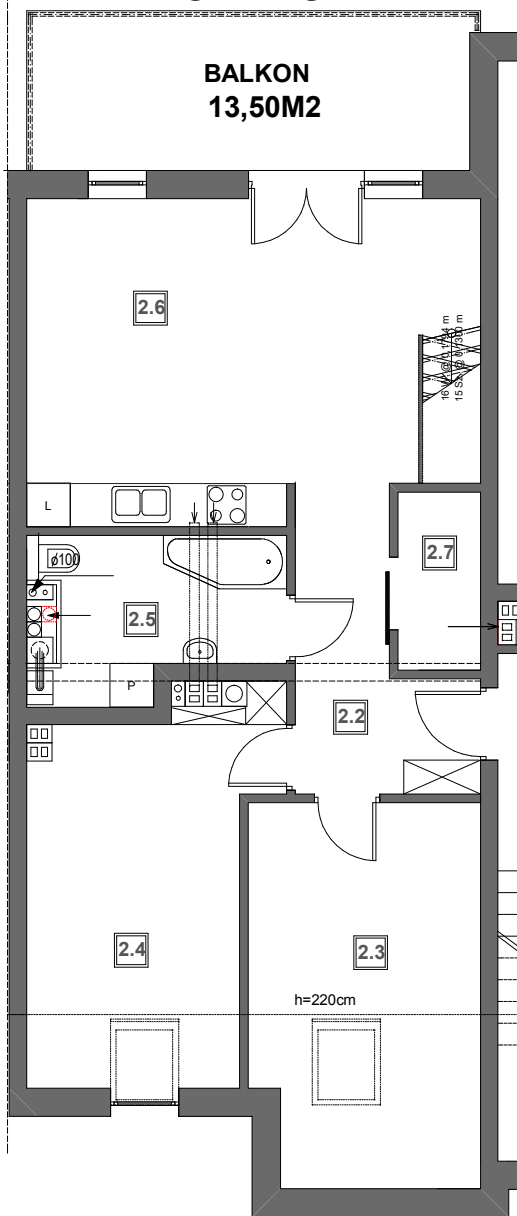
nr	pomieszczenie	pow.
2.2	p.pokój	7,32 m <sup>2</sup>
2.3	pokój	10,78 m <sup>2</sup>
2.4	pokój	13,95 m <sup>2</sup>
2.5	łazienka	6,60 m <sup>2</sup>
2.6	pokój dzienny+aneks kuchenny	26,29 m <sup>2</sup>
2.7	garderoba	2,65 m <sup>2</sup>
<b>RAZEM</b>		<b>67,59 m<sup>2</sup></b>
<b>antresola</b>		<b>25,80m<sup>2</sup></b>
<b>RAZEM PU</b>		<b>93,39 m<sup>2</sup></b>



**KLATKA "6A"**

**KLATKA "6B"**

## PODDASZE



## ANTRESOLA

