



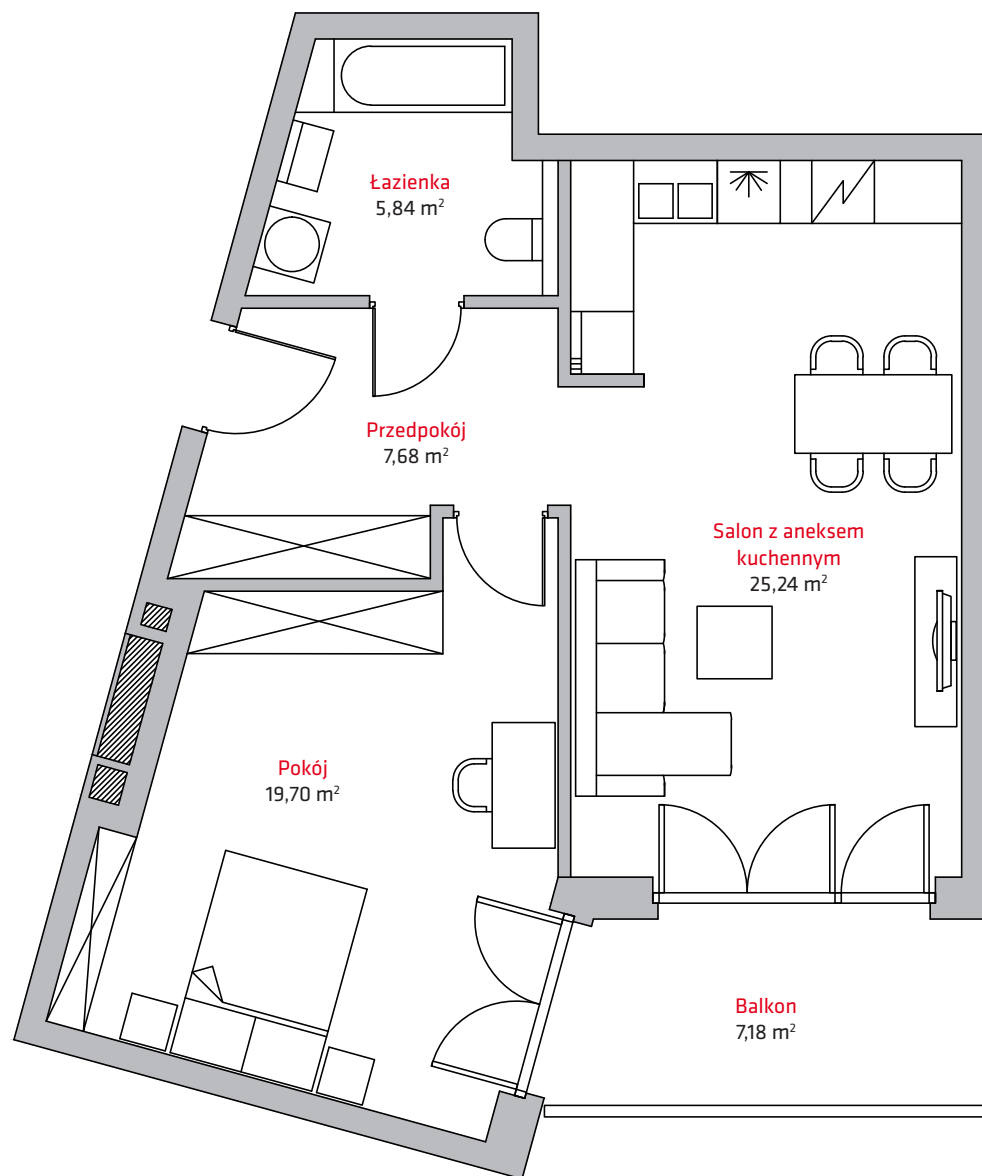
liczba pokoi **2**

piętro **2**

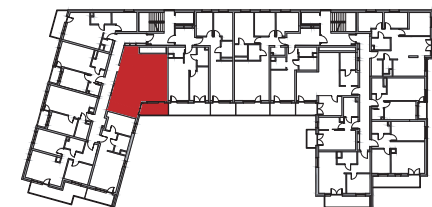
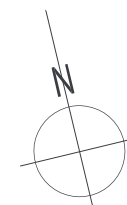
budynek **A**

NR

B10



1	Przedpokój	7,68 m ²
2	Łazienka	5,84 m ²
3	Salon z aneksem kuch.	25,24 m ²
4	Pokój	19,70 m ²
SUMA		58,46 m²
	Balkon	7,18 m ²



Kontakt:

tel. + 48 604 706 792
+ 48 693 620 372
email: biuro@vermelo.pl
www.vermelo.pl