

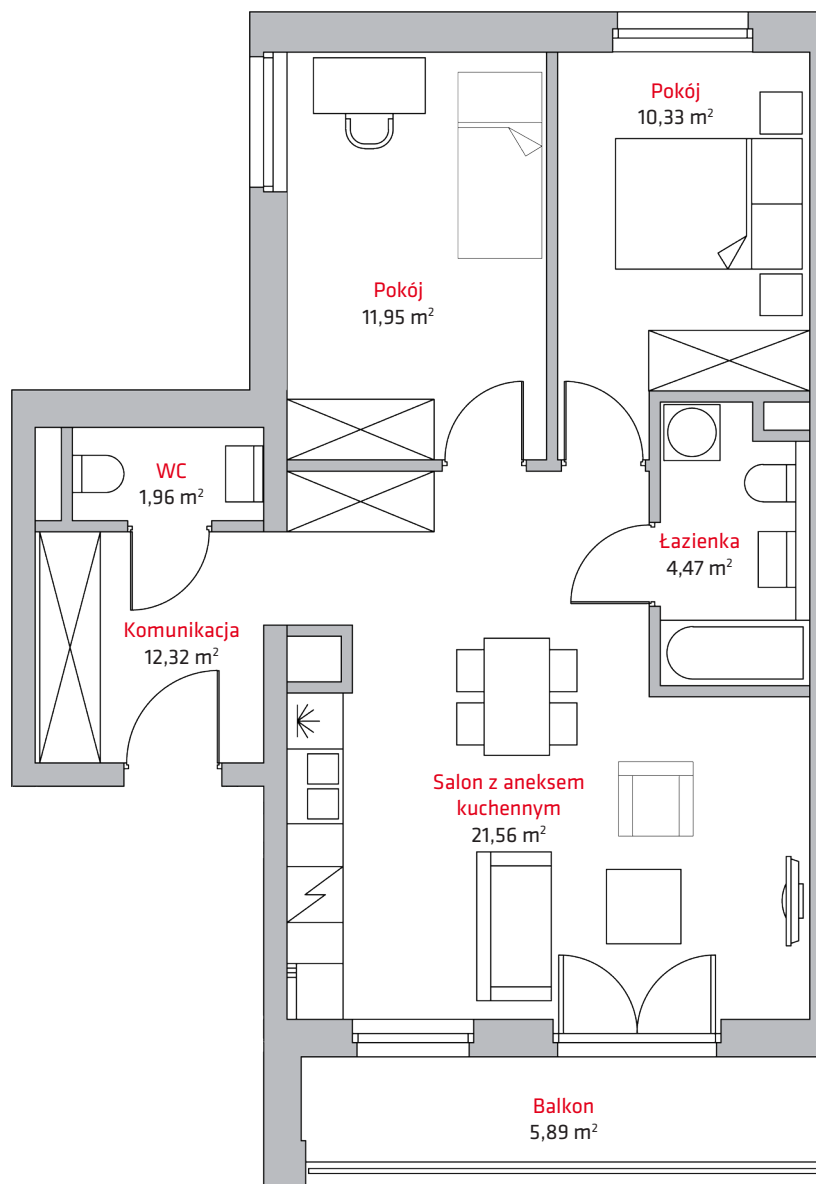


liczba pokoi **3**

piętro **4**

NR

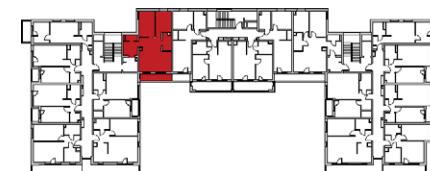
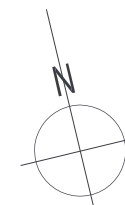
**A22**



- 1 Salon z aneks. kuch. .... 21,56 m<sup>2</sup>
- 2 Komunikacja ..... 12,32 m<sup>2</sup>
- 3 Pokój ..... 11,95 m<sup>2</sup>
- 4 Pokój ..... 10,33 m<sup>2</sup>
- 5 Łazienka ..... 4,47 m<sup>2</sup>
- 6 WC ..... 1,96 m<sup>2</sup>

**Suma ..... 62,59 m<sup>2</sup>**

Balkon ..... 5,89 m<sup>2</sup>



**Kontakt:**

tel. + 48 604 706 792  
+ 48 693 620 372  
email: [biuro@vermelo.pl](mailto:biuro@vermelo.pl)  
[www.vermelo.pl](http://www.vermelo.pl)