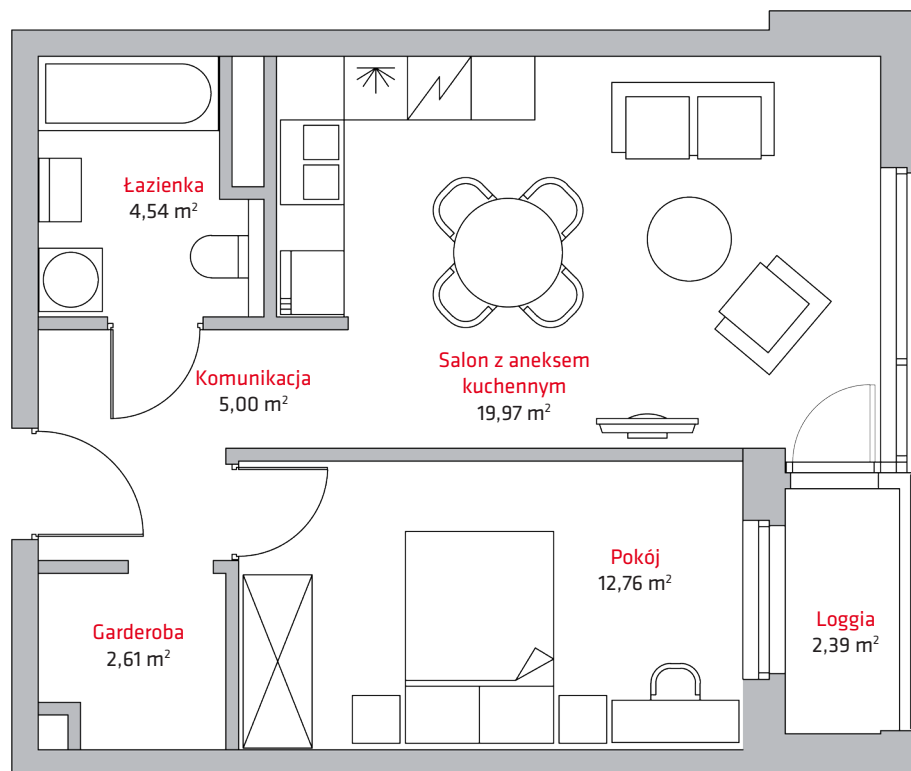


liczba pokoi **2**

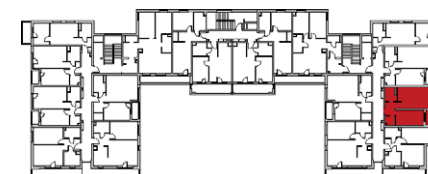
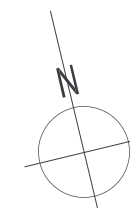
piętro **4**

NR

C24



1	Salon z aneks. kuch.	19,97 m ²
2	Pokój	12,76 m ²
3	Łazienka	4,54 m ²
4	Komunikacja	5,00 m ²
5	Garderoba	2,61 m ²
Suma		44,88 m²
	Loggia	2,39 m ²



Kontakt:

tel. + 48 604 706 792

+ 48 693 620 372

email: biuro@vermelo.pl

www.vermelo.pl