



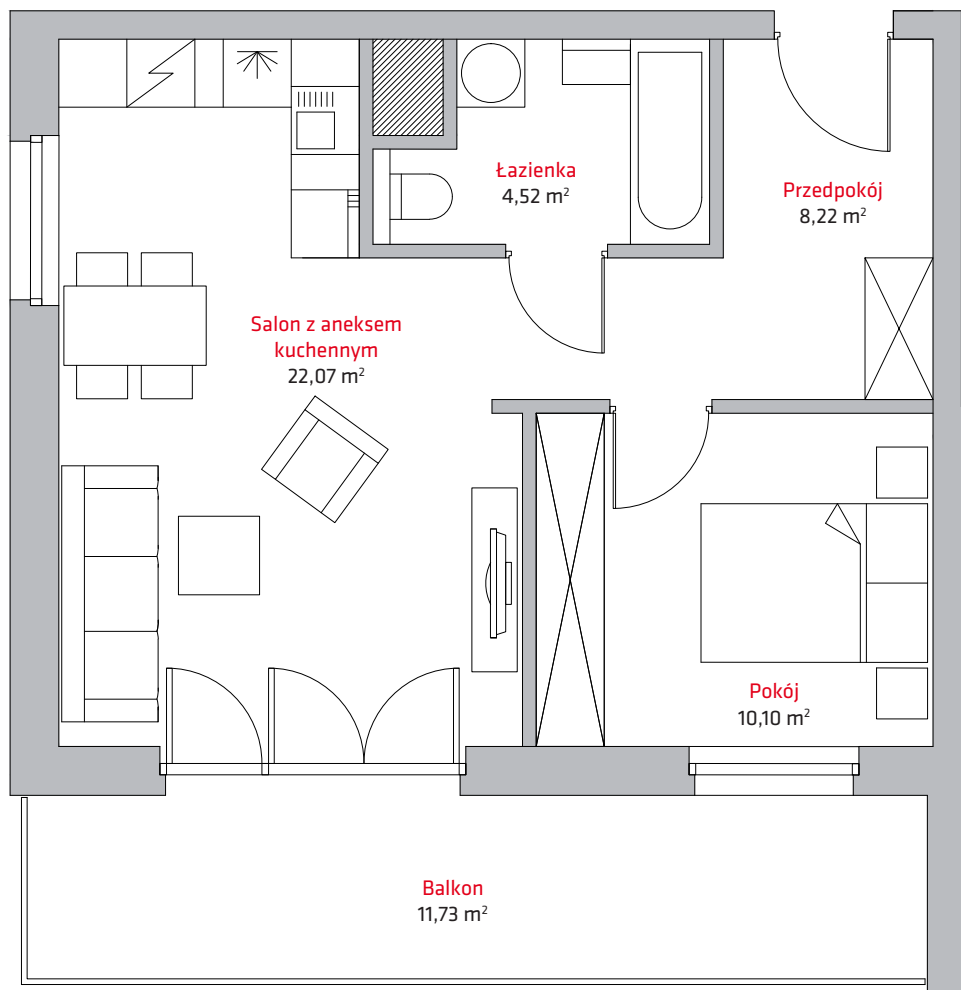
liczba pokoi **2**

piętro **1**

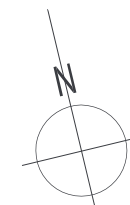
budynek **A**

NR

A4



| | | |
|-------------|-----------------------|----------------------------|
| 1 | Przedpokój | 8,22 m ² |
| 2 | Łazienka | 4,52 m ² |
| 3 | Pokój..... | 10,10 m ² |
| 4 | Salon z aneksem kuch. | 22,07 m ² |
| SUMA | | 44,91 m² |
| | Balkon | 11,73 m ² |



Kontakt:

tel. + 48 604 706 792
+ 48 693 620 372
email: biuro@vermelo.pl
www.vermelo.pl