

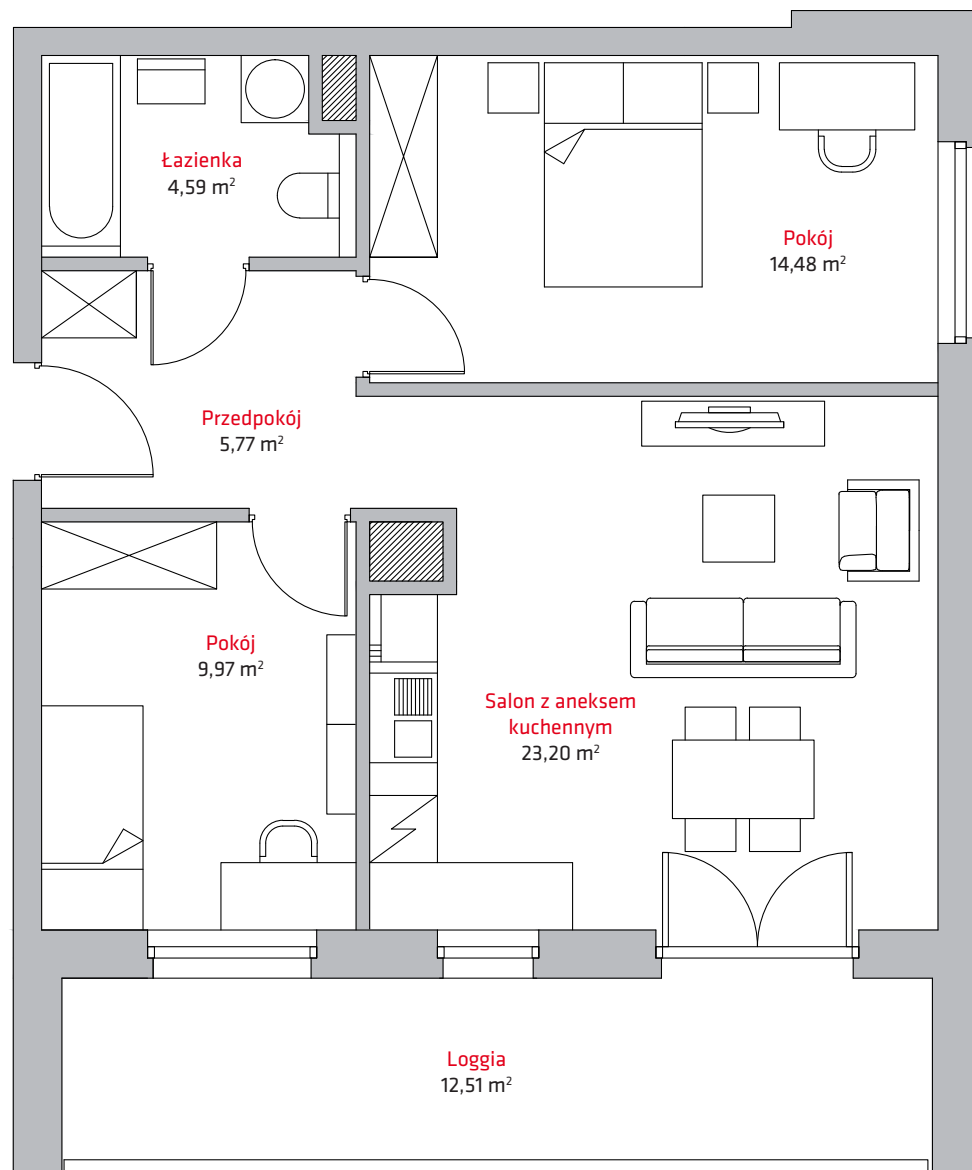
liczba pokoi **3**

piętro **9**

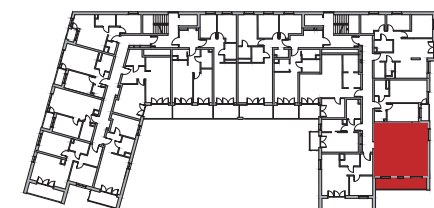
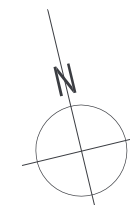
budynek **A**

NR

A67



1	Przedpokój	5,77 m ²
2	Łazienka	4,59 m ²
3	Pokój.....	14,48 m ²
4	Salon z aneksem kuch.	23,20 m ²
5	Pokój.....	9,97 m ²
SUMA		58,01 m²
	Loggia	12,51 m ²



Kontakt:

tel. + 48 604 706 792
+ 48 693 620 372
email: biuro@vermelo.pl
www.vermelo.pl