



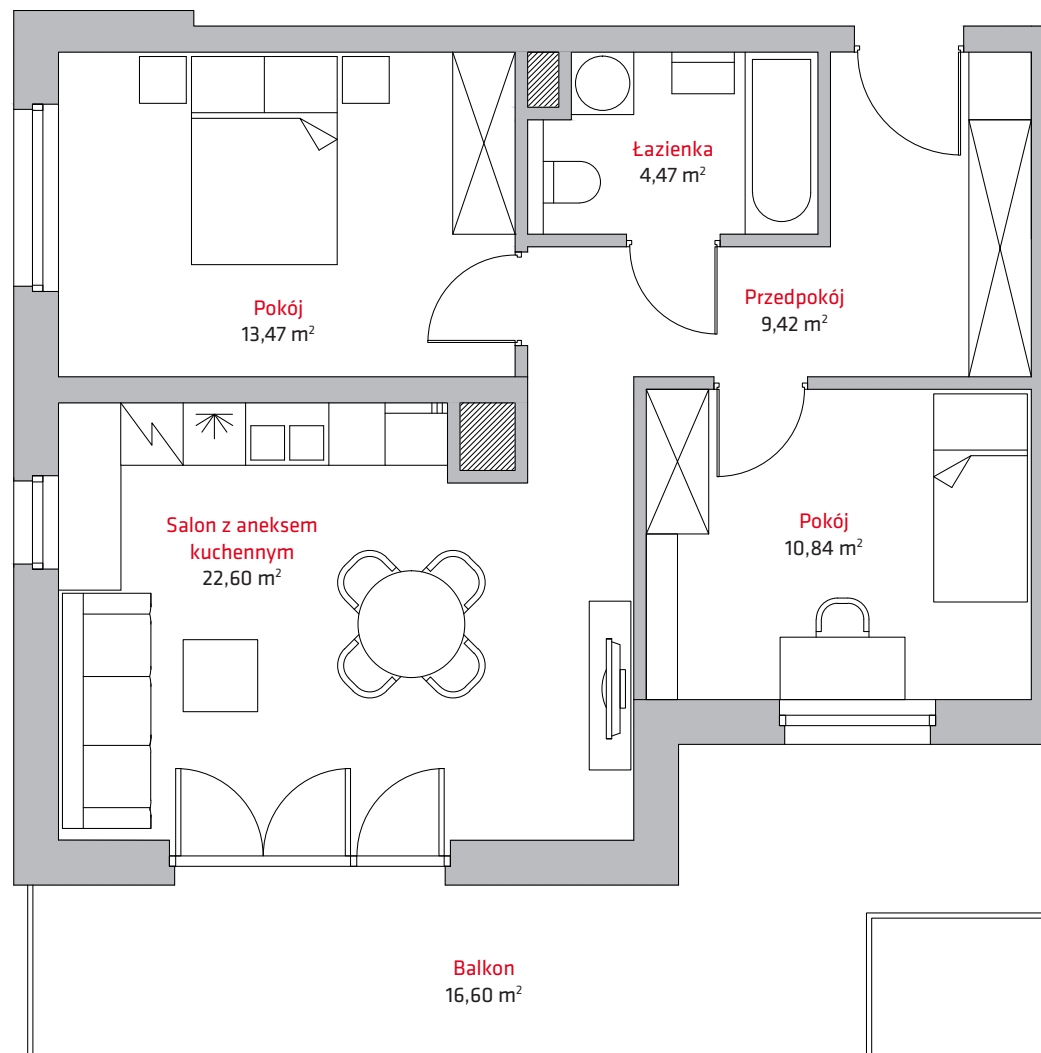
liczba pokoi **3**

piętro **1**

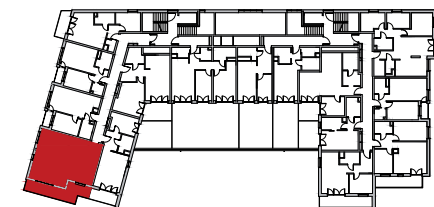
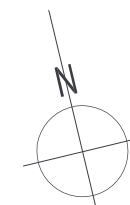
budynek **A**

NR

B4



1	Przedpokój	9,42 m ²
2	Łazienka	4,47 m ²
3	Pokój	13,47 m ²
4	Salon z aneksem kuch.	22,60 m ²
5	Pokój	10,84 m ²
SUMA		60,80 m²
	Balkon	16,60 m ²



Kontakt:

tel. + 48 604 706 792
+ 48 693 620 372
email: biuro@vermelo.pl
www.vermelo.pl