



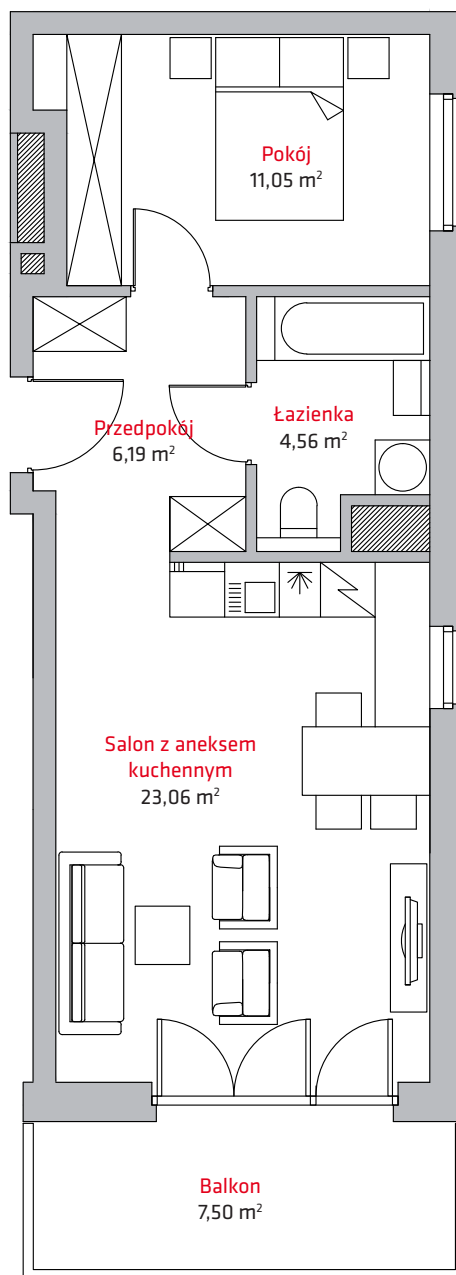
liczba pokoi **2**

piętro **8**

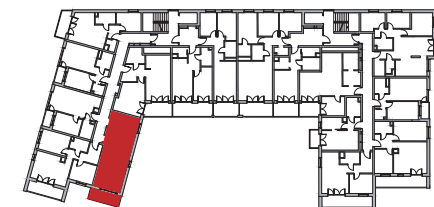
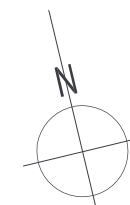
budynek **A**

NR

**B59**



1	Przedpokój .....	6,19 m <sup>2</sup>
2	Pokój .....	11,05 m <sup>2</sup>
3	Łazienka .....	4,56 m <sup>2</sup>
4	Salon z aneksem kuch. ....	23,06 m <sup>2</sup>
<b>SUMA</b>		<b>44,86 m<sup>2</sup></b>
	Balkon .....	7,50 m <sup>2</sup>



**Kontakt:**

tel. + 48 604 706 792  
+ 48 693 620 372  
email: [biuro@vermelo.pl](mailto:biuro@vermelo.pl)  
[www.vermelo.pl](http://www.vermelo.pl)