

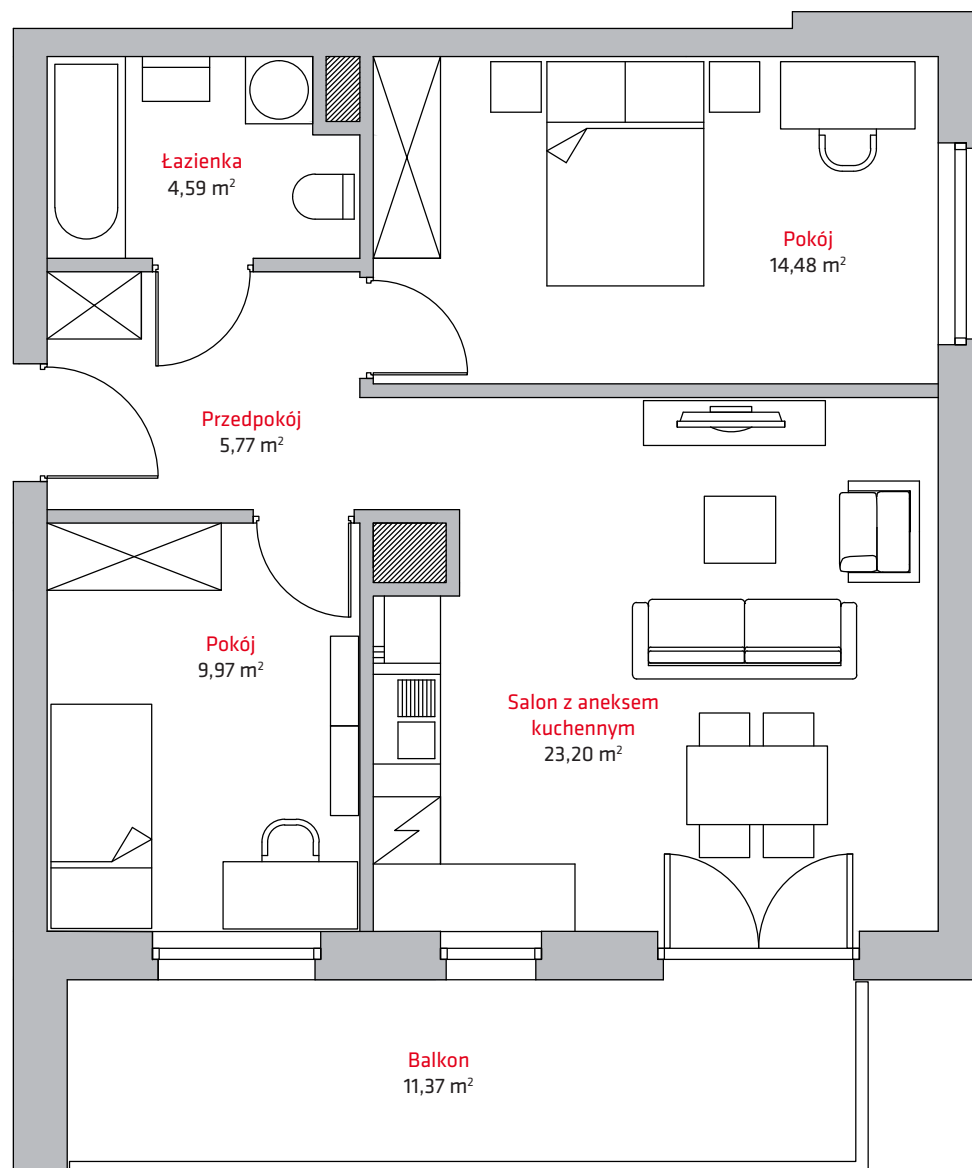
liczba pokoi **3**

piętro **4**

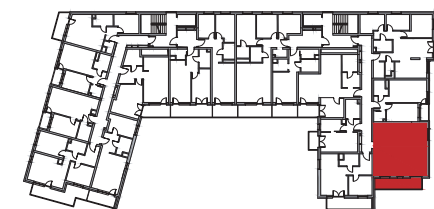
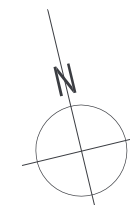
budynek **A**

NR

**A27**



1	Przedpokój .....	5,77 m <sup>2</sup>
2	Łazienka .....	4,59 m <sup>2</sup>
3	Pokój.....	14,48 m <sup>2</sup>
4	Salon z aneksem kuch.	23,20 m <sup>2</sup>
5	Pokój.....	9,97 m <sup>2</sup>
<b>SUMA</b>		<b>58,01 m<sup>2</sup></b>
	Balkon .....	11,37 m <sup>2</sup>



**Kontakt:**

tel. + 48 604 706 792

+ 48 693 620 372

email: [biuro@vermelo.pl](mailto:biuro@vermelo.pl)

[www.vermelo.pl](http://www.vermelo.pl)