



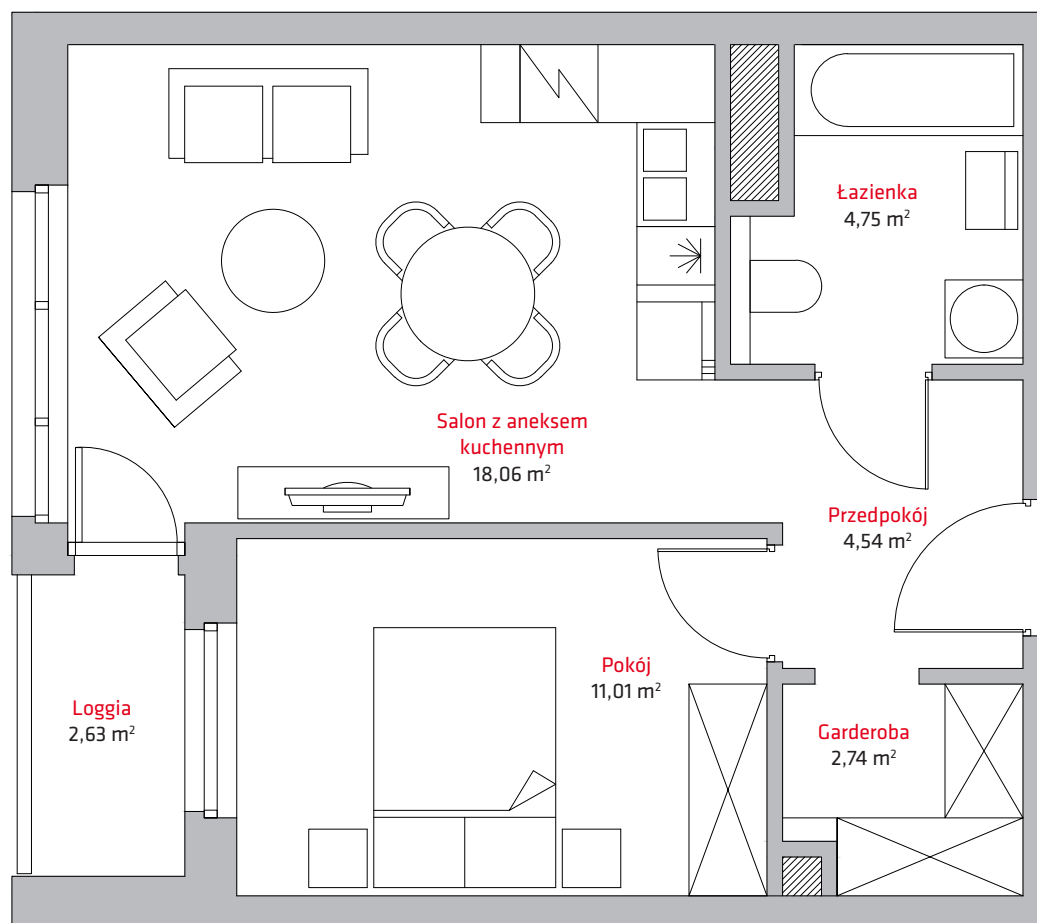
liczba pokoi **2**

piętro **10**

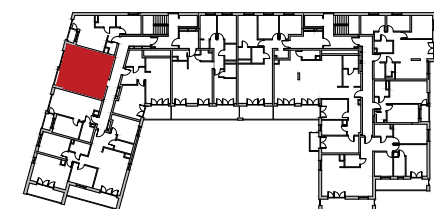
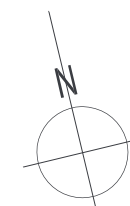
budynek **A**

NR

B76



1	Przedpokój	4,54 m ²
2	Łazienka	4,75 m ²
3	Salon z aneksem kuch.	18,06 m ²
4	Pokój	11,01 m ²
5	Garderoba	2,74 m ²
SUMA		41,10 m²
	Loggia	2,63 m ²



Kontakt:

tel. + 48 604 706 792
+ 48 693 620 372
email: biuro@vermelo.pl
www.vermelo.pl