

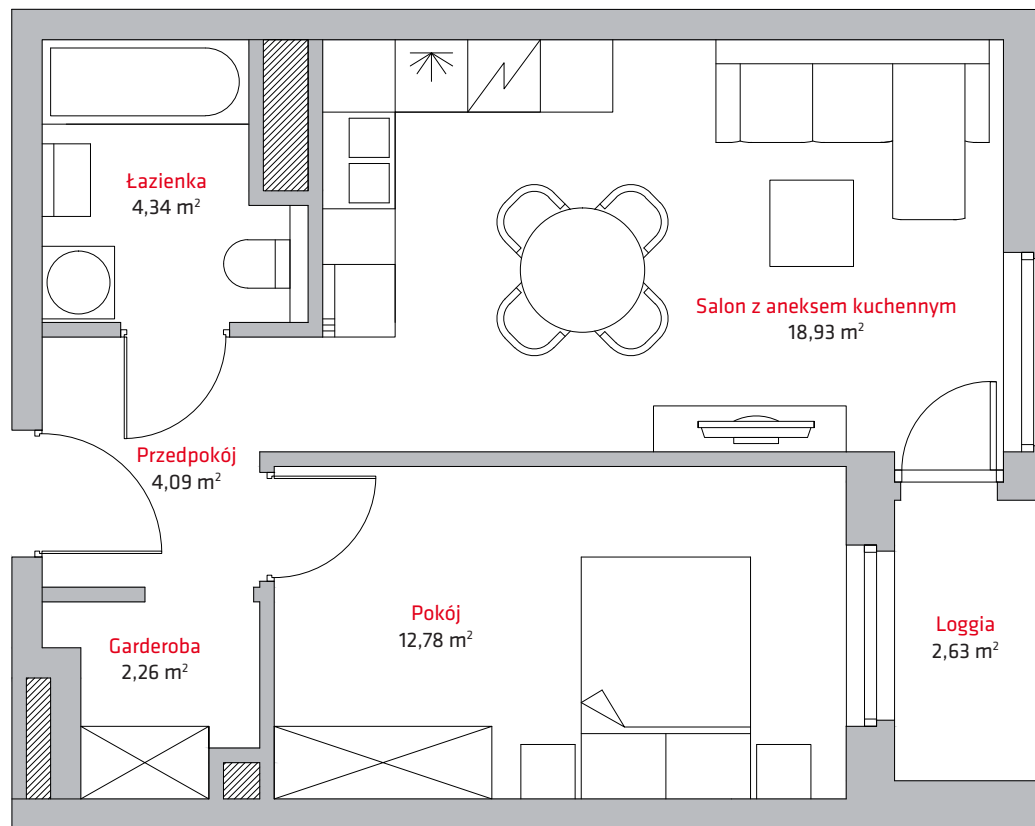
liczba pokoi **2**

piętro **10**

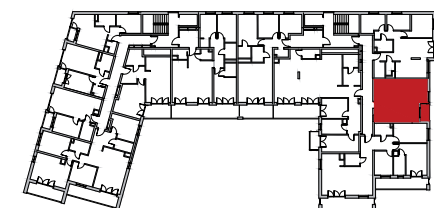
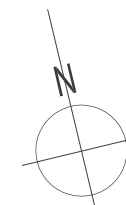
budynek **A**

NR

A74



1	Salon z aneksem kuch.	18,93 m ²
2	Pokój.....	12,78 m ²
3	Garderoba	2,26 m ²
4	Łazienka	4,34 m ²
5	Przedpokój.....	4,09 m ²
SUMA		42,40 m²
	Loggia	2,63 m ²



Kontakt:

tel. + 48 604 706 792
+ 48 693 620 372
email: biuro@vermelo.pl
www.vermelo.pl