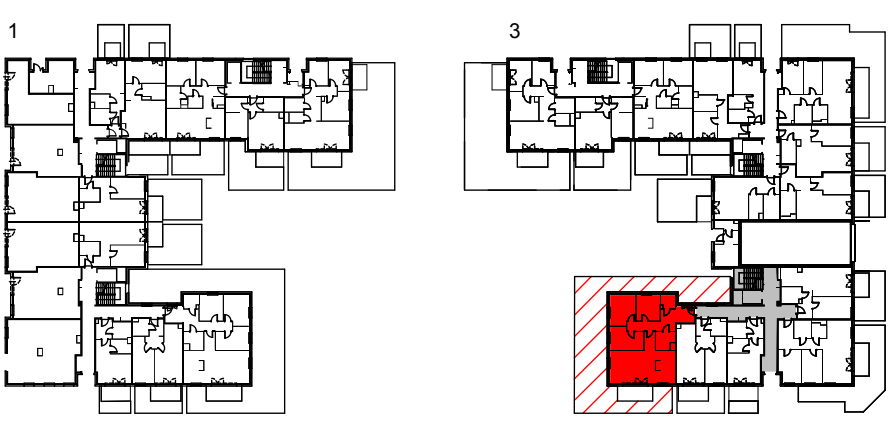
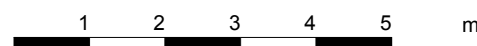
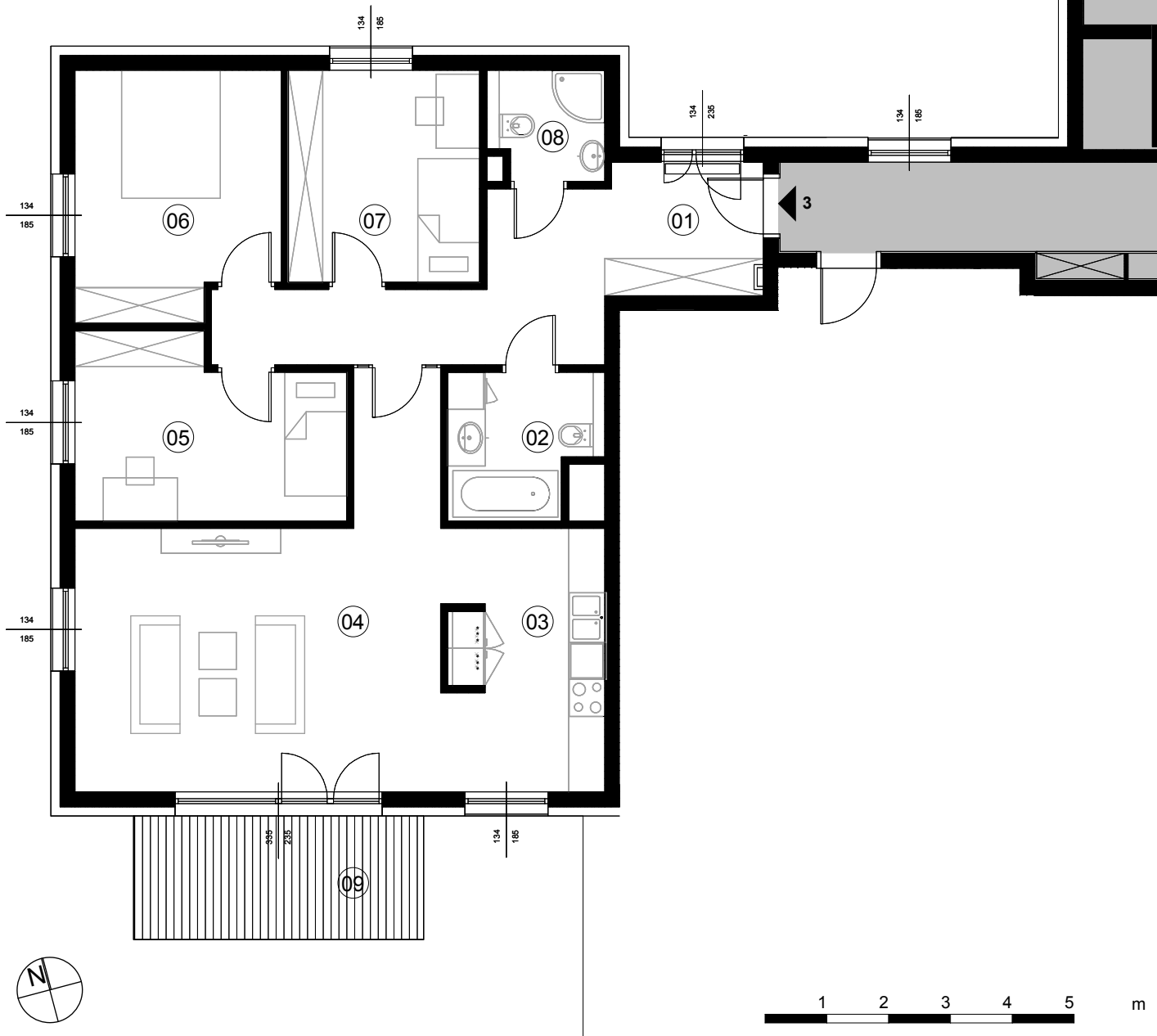


## Lokal mieszkalny nr 3



|                     |                           |
|---------------------|---------------------------|
| Rzut mieszkania     | format A4 skala 1:100     |
| Kondygnacja         | 1 / parter                |
| Nr lokalu           | 3                         |
| Pokoje              | 4                         |
| Pow. stan wykonany: | <b>98,30m<sup>2</sup></b> |
| 01 - Przedpokój     | 19,67m <sup>2</sup>       |
| 02 - Łazienka       | 5,26m <sup>2</sup>        |
| 03 - Kuchnia        | 10,68m <sup>2</sup>       |
| 04 - Pokój dzienny  | 24,58m <sup>2</sup>       |
| 05 - Sypialnia      | 11,77m <sup>2</sup>       |
| 06 - Sypialnia      | 12,67m <sup>2</sup>       |
| 07 - Sypialnia      | 10,44m <sup>2</sup>       |
| 08 - WC             | 3,23m <sup>2</sup>        |
| 09 - Taras          | 9,38m <sup>2</sup>        |
| Ogródek             | 143,40m <sup>2</sup>      |