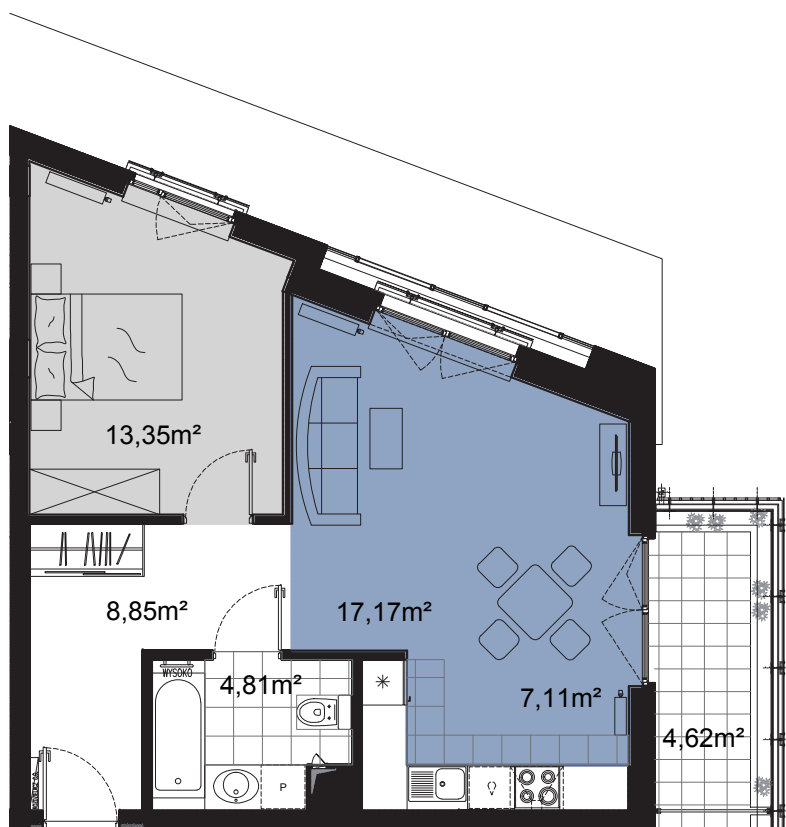




Krasińskiego
standard jutra

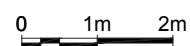
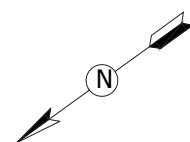
PIĘTRO 1
2 POKOJE + KUCHNIA
POWIERZCHNIA 51,29 m²

2



SPIS POMIESZCZEŃ

| | |
|-----------------|----------------------|
| Hall | 8,85 m ² |
| Łazienka | 4,81 m ² |
| Sypialnia | 13,35 m ² |
| Salon + kuchnia | 24,28 m ² |
| Balkon | 4,62 m ² |



SCHEMAT

