

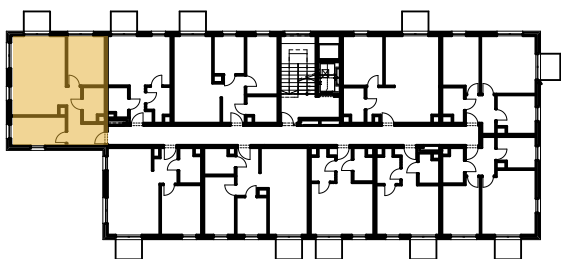
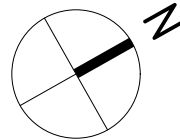


MIESZKANIE 3P+AK	NR B/1/11
Korytarz	8,00
Łazienka	4,26
Pokój	11,05
Pokój	9,39
Salon z aneksem	25,35
	58,05 m ²

ŚCIANY DZIAŁOWE 
 ŚCIANY NOŚNE 



PIĘTRO +1

