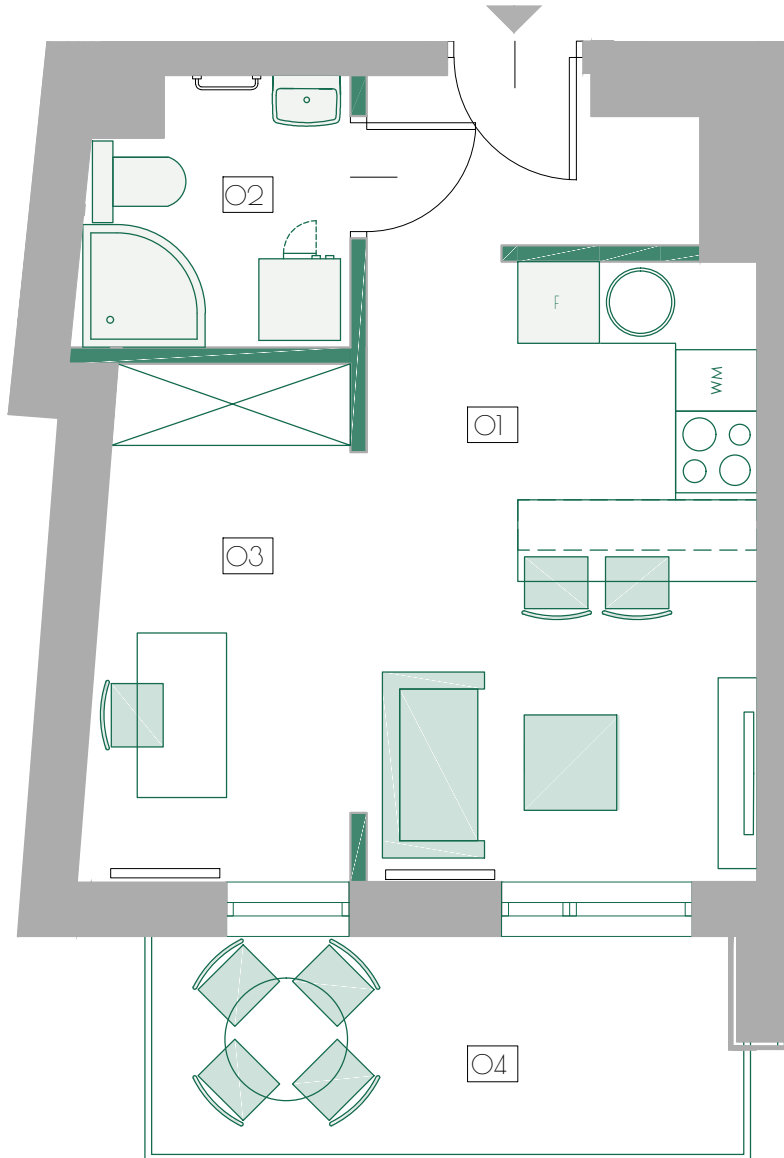


# #KAMIENICA "POD CZAPLĄ"

## OUTBUILDING AT RAKOWICKA ST. #14

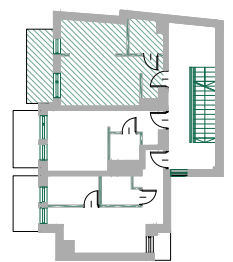


### APARTMENT NO 25 (2ND FLOOR)

O1	ROOM WITH A KITCHENETTE	15.60	m <sup>2</sup>
O2	BATHROOM	3.51	m <sup>2</sup>
O3	HOME OFFICE	6.90	m <sup>2</sup>
Total area of the APARTMENT NO 25		26.01	m <sup>2</sup>
O4	BALCONY	6.59	m <sup>2</sup>

APARTMENT HEIGHT - 2.65 m

\*THIS CATALOG SHEET HAS BEEN COMPILED ON THE BASIS OF A CONSTRUCTION PROJECT. SURFACE VALUES ARE ESTIMATED



PARTITION WALL

LOAD - BEARING WALL