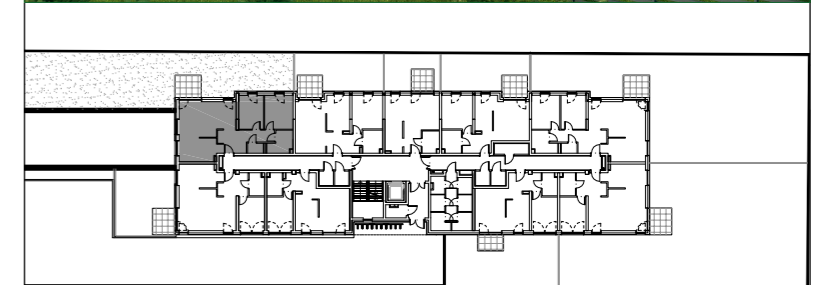
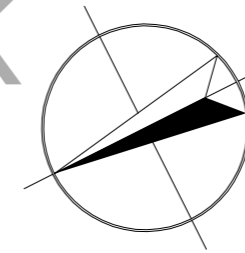


M30. 3P+K  
68,05 m<sup>2</sup>



kondygnacja 1 - parter

mieszkanie nr 30

1	hall	11,08 m <sup>2</sup>
2	salon	20,66 m <sup>2</sup>
3	kuchnia	9,86 m <sup>2</sup>
4	pokój	9,21 m <sup>2</sup>
5	pokój	10,48 m <sup>2</sup>
6	łazienka	5,09 m <sup>2</sup>
7	wc	1,67 m <sup>2</sup>
razem		68,05 m <sup>2</sup>

ogród	161,58 m <sup>2</sup>
taras	6,58 m <sup>2</sup>

Ogród\_161,58m<sup>2</sup>

6,58

