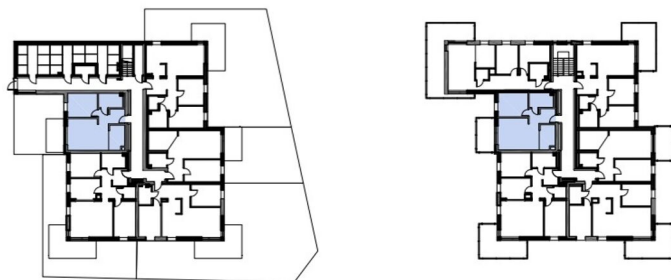


Budynek L

PARTER + I PIĘTRO



PARTER

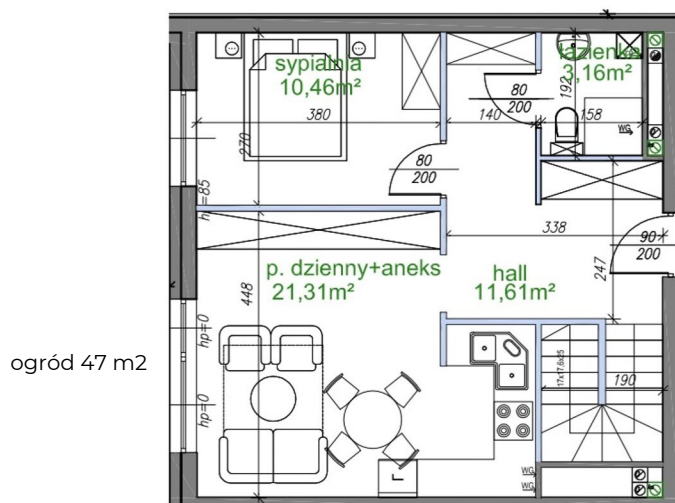
pokój dzienny	
+aneks kuchenny	21,31 m <sup>2</sup>
sypialnia	10,46m <sup>2</sup>
łazienka	3,16 m <sup>2</sup>
hall	11,61 m <sup>2</sup>

I PIĘTRO

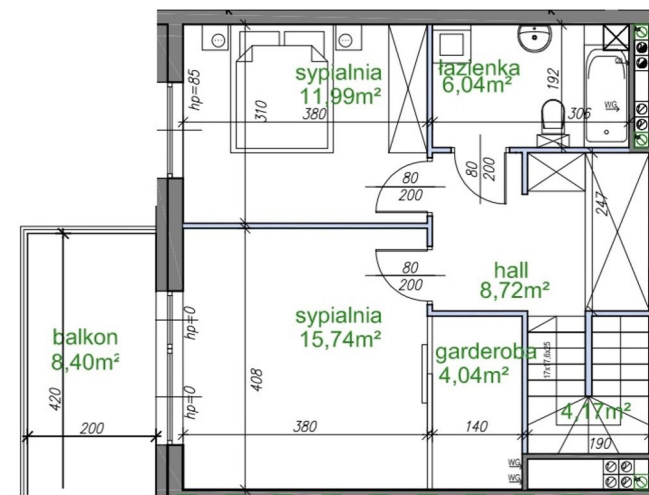
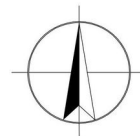
sypialnia	11,99 m <sup>2</sup>
sypialnia	15,74 m <sup>2</sup>
garderoba	4,04 m <sup>2</sup>
łazienka	6,04 m <sup>2</sup>
hall	8,72 m <sup>2</sup>
schody	4,17 m <sup>2</sup>

razem parter 46,54 m<sup>2</sup>  
ogród 47 m<sup>2</sup>

razem I piętro 50,70 m<sup>2</sup>  
balkon 8,40 m<sup>2</sup>



PARTER



I PIĘTRO

