

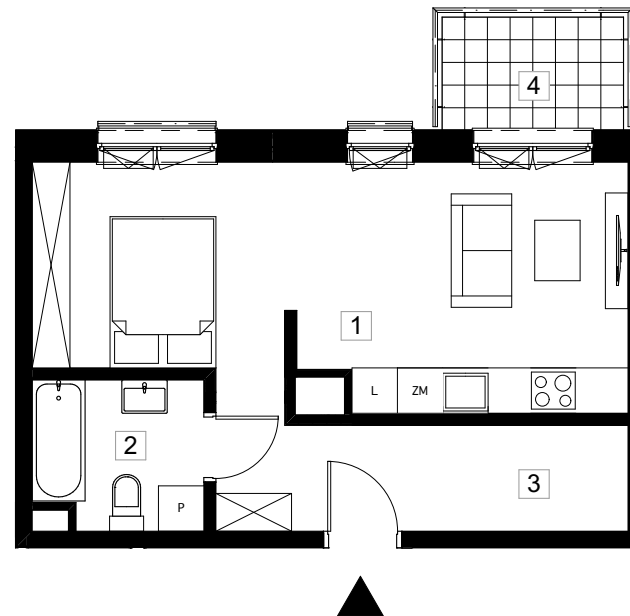
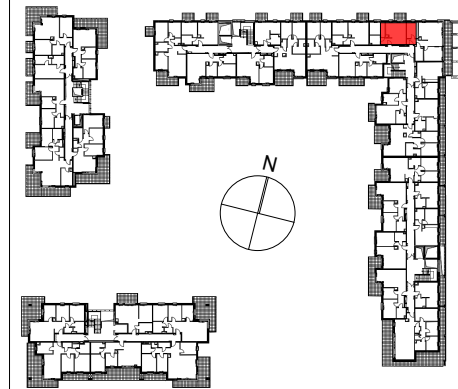
PRYMASA TYSIĄCLECIA 83

Al. Prymasa Tysiąclecia 83
Ordona 5A
Warszawa Polska
INWESTOR



PHN SPV 13 sp. z o.o.

ETAP II +2



symbol mieszkania **LM 136**

| | |
|---------------|-----|
| nr klatki | I. |
| piętro | 2/8 |
| nr mieszkania | 4 |

| nr | nazwa pomieszczenia | pow. (m ²) |
|----|---------------------|------------------------|
| 1 | salon z aneksem | 24,2m ² |
| 2 | łazienka | 4,7m ² |
| 3 | hall | 8,7m ² |

| pow. użytkowa | | 37,6m ² |
|---------------|--------|--------------------|
| 4 | balkon | 3,6m ² |

