

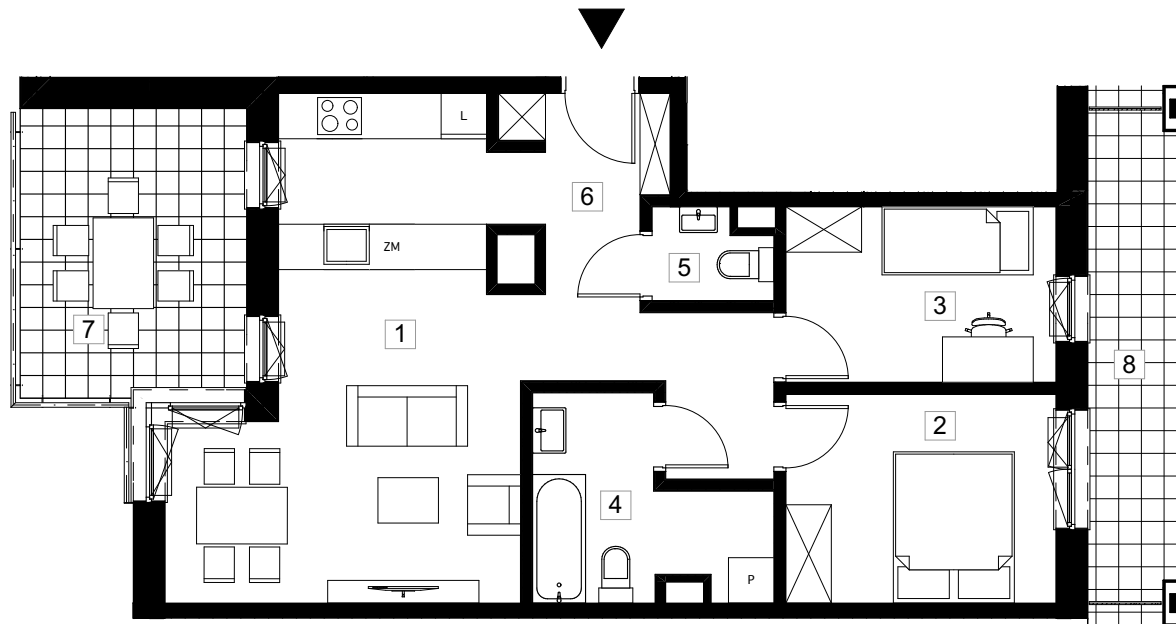
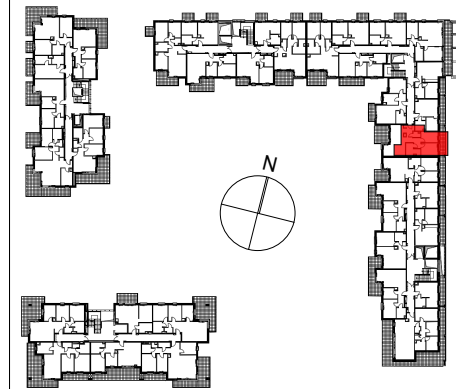
PRYMASA TYSIĄCLECIA 83



Al. Prymasa Tysiąclecia 83
Ordona 5A
Warszawa Polska
INWESTOR

PHN SPV 13 sp. z o.o.

ETAP II +3



symbol mieszkania **LM 149**

| | |
|---------------|-----|
| nr klatki | I. |
| piętro | 3/8 |
| nr mieszkania | 8 |

| nr | nazwa pomieszczenia | pow. (m ²) |
|----|---------------------|------------------------|
| 1 | salon z aneksem | 25,4m ² |
| 2 | sypialnia 1 | 10,4m ² |
| 3 | sypialnia 2 | 8,7m ² |
| 4 | łazienka | 7,2m ² |
| 5 | WC | 2,1m ² |
| 6 | hall | 10,1m ² |

| pow. użytkowa | | 63,9m ² |
|---------------|----------|--------------------|
| 7 | balkon 1 | 11,3m ² |
| 8 | balkon 2 | 8,3m ² |

