

# PRYMASA TYSIĄCLECIA 83



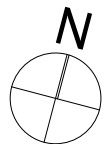
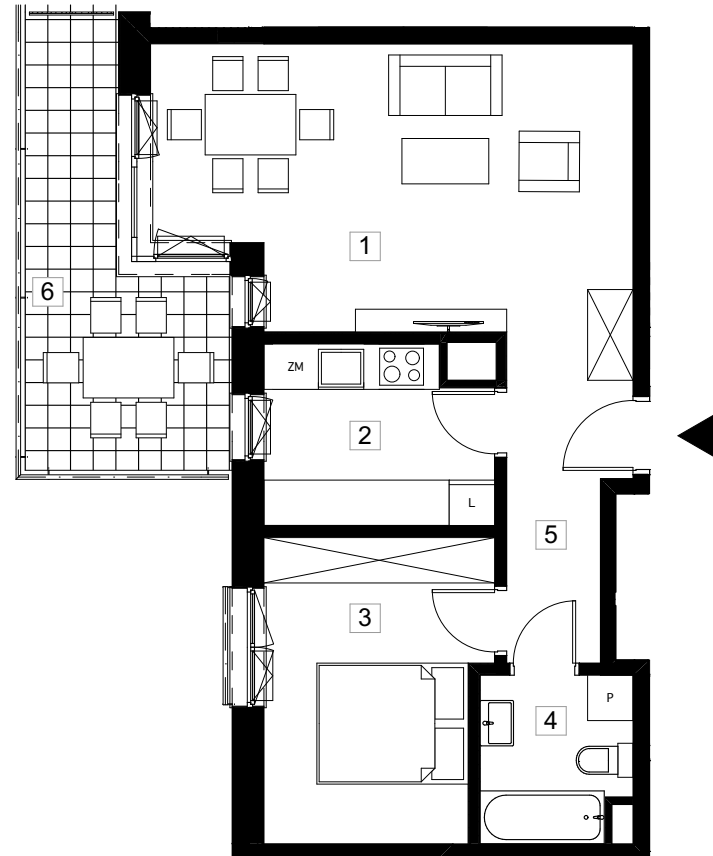
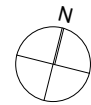
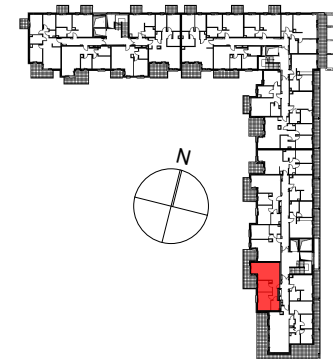
Al. Prymasa Tysiąclecia 83  
Ordona 5A  
Warszawa Polska

INWESTOR

PHN SPV 13 sp. z o.o.

ETAP II

+7



symbol mieszkania

**LM 248**

nr klatki	<b>J.</b>
piętro	<b>7/7</b>
nr mieszkania	<b>3</b>

nr	nazwa pomieszczenia	pow. (m <sup>2</sup> )
1	salon	22,7m <sup>2</sup>
2	kuchnia	7,5m <sup>2</sup>
3	sypialnia	12,1m <sup>2</sup>
4	łazienka	4,6m <sup>2</sup>
5	hall	6,7m <sup>2</sup>

<b>pow. użytkowa</b>	<b>53,6m<sup>2</sup></b>
6 balkon	11,3m <sup>2</sup>