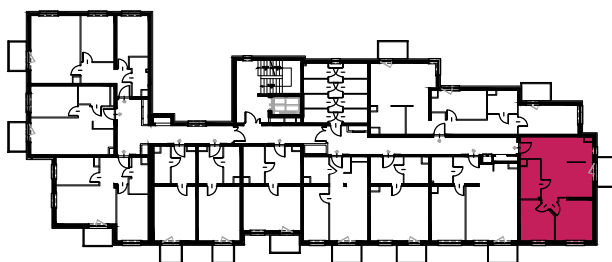
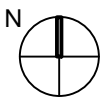
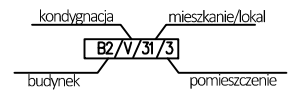
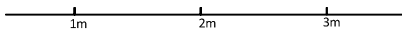


ściany działowe



BUDYNEK	B2
NUMER LOKALU	31
PIĘTRO	PIĘTRO 2 (kondygnacja V)
ILOŚĆ POKOI	3
POWIERZCHNIA LOKALU (m ²)	55,33 m ²
POWIERZCHNIA BALKONU, TARASU(m ²)	3,75 m ²