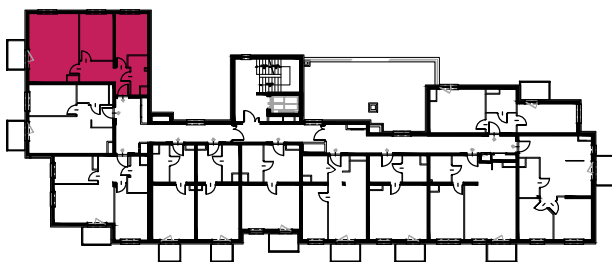
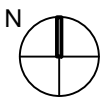
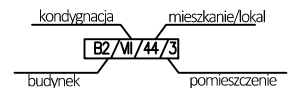
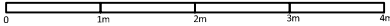


ściany działowe



| | |
|---|-------------------------------|
| BUDYNEK | B2 |
| NUMER LOKALU | 44 |
| PIĘTRO | PIĘTRO 4 (kondygnacja VII) |
| ILOŚĆ POKOI | 3 |
| POWIERZCHNIA LOKALU (m ²) | 61,83 m ² |
| POWIERZCHNIA BALKONU, TARASU(m ²) | 3,75 m ² |